



EAR to the GROUND

NOVEMBER 2022 ISSUE



**South Bruce
VOTES**
Municipal Election October 24, 2022

Dear South Bruce residents:

Way to go! Over 59 per cent of eligible voters in South Bruce cast their ballot in last month's municipal election.

How does that compare to other municipalities? Voter turnout across the province averaged around 33 per cent. That's an historic low for municipal elections, which some have attributed to voter fatigue due to recent provincial and federal elections or that voters didn't know the candidates well enough to cast their vote. That wasn't case in South Bruce! It is great to see our residents engaged and motivated to participate.

Most exciting for us to see was how active younger voters were in this election. They attended all-candidates meetings and they were active on social media. They encouraged their friends and neighbours to get involved and to vote.

Finding a site for the long-term management of used nuclear fuel is the responsibility of this generation and, wherever the DGR is located, future generations will build, operate and maintain it. I'm so glad young people are participating and making their voices heard.

Every election matters but this one was especially important because, whether or not we are willing to host the proposed DGR, it will be decided in this term of office. Let's keep the momentum going!

There will be many opportunities to take part in the DGR site selection process, become informed, ask questions, and express your thoughts and opinions. NWMO recently held open houses to get some early feedback about the design and function of the Centre of Expertise. The Centre will share knowledge about the DGR, and it will also be an anchor for community revitalization, so if it is built here, let's make sure our thoughts and ideas are incorporated. The South Bruce Community Liaison Committee typically meets on the first Thursday of each month at 7 p.m. These meetings are a great way to learn about the project and ask questions of the educational speakers.

We at Willing to Listen are also thinking about how you can learn more about the proposed DGR and get involved. If you have any thoughts or suggestions, we'd love to hear from you. Feel free to email me directly at swhytockinsouthbruce@hotmail.com.

Finally, I want to thank all the candidates who put their names forward — there wouldn't have been an election without you! I want to thank Mayor Bob Buckle for his years of leadership and service to South Bruce — you always demonstrated respect and integrity. I also want to thank outgoing Couns. Ben Ireland and Wayne Huber for their dedicated service to our community.

To our new council, thank you in advance for the hours you will spend talking with residents, reading reports, and attending council and community events over the next four years.

Sheila Whytock,
Teeswater



Youth... the future of South Bruce

The Economic Development Study on Youth was presented at the Community Liaison Committee meeting in August. For the purposes of study, 'youth' was defined as individuals between the ages of 12 and 29 – those in the stage of life from adolescence to early adulthood.

Economic Development Study on Youth

As part of this study, youth in the area provided input on topics related to economic development and youth priorities. This led to insights around what would help make South Bruce a great place to live and work, a vision for the community, and what the municipality must do to attract and retain youth and young professionals.

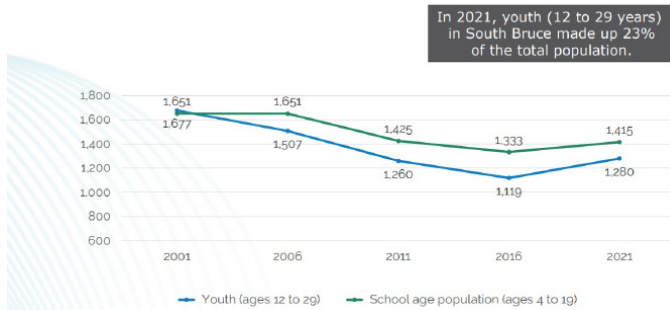
Factors that are likely to make youth stay or relocate to South Bruce include quality of life considerations; recreational and cultural amenities; transportation options; cultural diversity; and access and availability of health and wellness supports.

Youth are concerned about affordability and disparity in income levels. The limited housing options and increasing housing values impede young people from affording to live in South Bruce, especially if income levels continue to be lower as compared to urban centres that offer higher wages for the same job.

Youth in South Bruce envision the community to be open, inclusive, and welcoming; promote positive community culture; and address barriers to opportunity for all.

The population statistics and projections were enlightening. There has been a decrease in the school-age and youth population in South Bruce over the past 20 years. The declining population could be attributed to the rapidly aging population and the low replacement rate.

HISTORIC YOUTH POPULATION IN SOUTH BRUCE

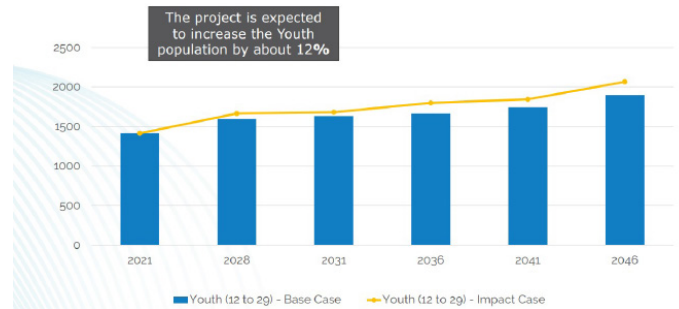


Source: metroeconomics, 2022

However, South Bruce is a growing municipality. For the Base Case (without the DGR project), the community is projected to experience 40 per cent growth from 2021-46, with youth being a central part of this. If we just look at the youth population in the Base Case, it is projected to increase by 34 per cent from 2021

to 2046 (an addition of 484 people). The Impact Case (with the DGR project), a higher growth rate of 46 per cent is expected; this translates into 167 extra youth (2,066 youth vs 1,899).

PROJECTED YOUTH POPULATION IN SOUTH BRUCE



Source: metroeconomics, 2022

If the NWMO project is sited here, it will provide employment opportunities across the region and impact on the municipality's population, as people commute and move to South Bruce to be close to work. Between the NWMO Project and ongoing economic and commercial opportunities in sectors including construction and agri-technology, a stable and skilled labour force supply is required. South Bruce's youth and the existing and future school-aged population will form a significant target audience to meet these workforce needs.

The study concluded that a proactive strategy will be needed to promote youth community engagement and encourage youth and young professionals to stay in South Bruce and build their professional careers. The strategic directions for youth economic development include:

- Support attracting youth to trades.
- Support attracting youth to engineering and related positions (STEM).
- Support attracting youth to the agricultural sector.
- Support youth entrepreneurship and innovation.
- Promote Diversity, Equity, and Inclusion (DEI) and quality of life.



Visit the South Bruce website to read the full Economic Development Study on Youth (and many other studies!).

If you have any questions or comments for us at Willing to Listen, please reach out via the Facebook page or email willingtolistensouthbruce@gmail.com

WILLING TO LISTEN
willingtolisten.ca

@WillingtoListenSouth

/WillingtoListenSouthBruce

Willing to Listen – South Bruce Proud podcast available on all platforms

SOUTH BRUCE DGR



PRO COMMUNITY LEARNING